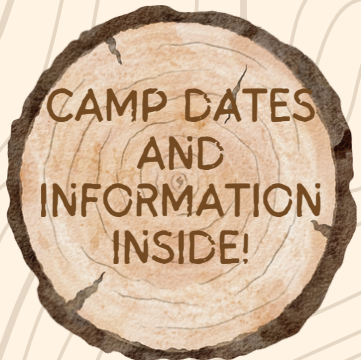


An illustration of a campfire with logs and flames, set against a backdrop of evergreen trees and a large yellow sun. The entire scene is framed by a background of light gray topographic contour lines.

SHILOH BIBLE CAMP 2026

BROCHURE

A circular graphic resembling a cross-section of a log, with a dark brown outer ring and a lighter brown center showing concentric growth rings.

CAMP DATES
AND
INFORMATION
INSIDE!



Purpose, Mission & Vision

The purpose of this camping ministry shall be to create and maintain a "Christian Conference Center" for the furtherance of the Gospel, and to facilitate ministry outreaches that are evangelical with a major emphasis on nurture in the Word of God, growth, and service.

We hope that every camper has fun and grows in their relationship with Jesus.

"Study, Do & Teach the Word."

Many camps these days seem to be distracted by all the activities. The activities become their primary focus, and even their very identity. Although we have many activities at Shiloh, and strive to do our best to insure the campers have a blast, our primary focus is still the Word of God, and the Gospel of Jesus Christ.

We prioritize things in our schedule such as chapels, cabin devotions, personal devotions, Bible Quizzing, and even strive to make our Ultimate Challenge (an extended, theme based team competition at the end of each week) geared in such a way that the entire event teaches a spiritual principle or principles which we highlight at the end of the competition.

We are firmly committed to faithfully uphold and teach the Bible, God's Word.

We are also committed to offer quality programming at the most affordable price possible, to allow as many people as possible to learn about Jesus.

Mission Statement

Impact Campers For Jesus Christ for the furtherance of the Gospel.

Vision

We want to equip the next generation in evangelism, theology, sound doctrine, and defending their faith.

We have been entrusted with the responsibility of maintaining a clean, organized, and up-to-date camp for campers and our groups at Shiloh.

Financial Aid

We are committed here at Shiloh to keep the price of our camps as low as possible, so that as many kids can come and hear about Jesus. We do this through a variety of ways. First, all our full-time staff are missionaries who raise their own support. Second, all our support staff are volunteers. Third, we rely heavily on donations. Our operating costs are not met in full by the funds we receive from camper fees. This means we rely on monthly donations and other gifts that gracious donors give to our ministry. We don't want to turn anyone away due to finances. Camper Assistance funds are available.

Shiloh's Missionary Staff

Each of Shiloh's missionaries serves the Lord by serving our campers.

Our dedicated staff is committed to ensuring the physical and spiritual well-being of our campers.

Every missionary brings unique talents and skills to Shiloh, and they are grateful to serve together.

Please continue to keep our staff and their families in your prayers.



HIDALGO FAMILY
Executive Director



RANKIN FAMILY
Facilities/Versatile staff



BRIANA DRUMMOND
Office Manager



HENNESSY FAMILY
Program Director/Kitchen



COHRAC FAMILY
Facilities Director



TIEGAN PHILLIPS
Timothy Coordinator

For more info about each family and how you can pray and support, please visit our website at:

shilohbibleconference.com/missionaries

or scan the QR code here:



Who is Invited:

Summer camps are intended for campers between the ages of 7 and 18. They are designed for those who would like to be introduced to the love of Jesus and all who have a desire to grow in their relationship with Him and have some fun with other campers at the same time. Come prepared to have your faith challenged in chapel times, devotions, fellowship, and skills classes.

When and Where:

Summer camps will be held at Shiloh Bible Camp between June 15th and July 24th, 2026. Check-In will be at 2 pm on Mondays and Checkout at 11:30 am on Fridays or Saturday (Trailblazer Camp only).

How Do I Get There:

The camp is located just outside Donnelly, ID. In Donnelly, turn west off Hwy. 55 onto Roseberry Rd. Go approximately 2 miles, then turn North (right) onto Gestrin Rd. and proceed about ¼ mile. Bus transportation will be available for all summer camps.

Registration Details:

Registration for camp can be completed online at shilohbibleconference.com. In order to be considered registered for camp, online registration must be completed in its entirety. Complete and bring the form at the back of this brochure to earn Shiloh Bucks to be used in the camp store.

If your camper has a fever with sore throat, and/or cough in the seven days prior to camp, we ask that you please DO NOT send them to camp. If your camper has been exposed to an influenza like illness in the last seven days, we ask that you notify us of this contact. All campers need to be 48 hours “symptom free” (including off of fever reducing medications) before arriving at camp.



Tier Pricing for all Summer Camps

Tier 3 (True Cost): \$200

This tier aims to cover the true full cost of running the camp, including food, supplies, insurance, program, and facility upkeep.

Tier 2 (Partial Financial Support): \$175

This tier is a middle ground, where families pay a portion of the true cost, and the camp covers the rest through fundraising or other means.

Tier 1 (Financial Aid Support): \$145

This tier is the most discounted, offering a lower price point for families who need financial assistance to afford camp.

You choose what tier best fits your family!

No Impact on Experience:

Campers at all tiers receive the same quality of experience, with no difference in activities, staff, or resources.

Financial Assistance:

Families who need assistance in addition to tier 1 are still eligible for additional financial aid or scholarships.

Supporting the Camp:

Choosing a higher tier helps support the camp's operations and allows it to offer reduced rates to other families.

Summer Camp Schedule

2026

June
15-19
Explorer
Camp #1
Ages 10-12

June
22-26
Adventure
Camp
Ages 7-9

July
6-10
Pathfinder
Camp
Ages 13-15

July
13-18
Trailblazer
Camp
Ages 16-18

Optional
Add-on Rafting
Trip for
\$70

July
20-24
Explorer
Camp #2
Ages 10-12



Summer Camp Program

2026 Theme: Mission: Impossible

Your mission may be impossible...but God makes it possible. - Luke 18:27

Worship in Chapel through Music and The Word

Singing and Bible teaching twice a day.

Activities:

Activities are chosen daily. Potential activities include alternating sports, volleyball, basketball, archery, riflery, arts and crafts, art journaling, paddle boarding, giant waterslide, medieval swordplay, swimming at the lake, and pickleball. Activities will be made available based on the availability of teachers. Paintball will be available for Pathfinder and Trailblazer camps.

Free Time:

Ping-Pong, pool, soccer, volleyball, 9 Square, basketball, pickle ball, disc golf, foosball, spike ball, ladder toss, plastic axe throwing, and board games.

Biblical Team Challenges

During the Explorer, Pathfinder, and Trailblazer camps. Teams compete against each other in an exciting competition.

Other Activities:

Cabin Clean-up Competition, Cabin Devotions, Daily Rest and Relax times, Organized Games, Mail Call (send your camper mail!), Rafting (Trailblazer Camp), etc.

Ultimate Challenge:

The culmination of a week of competition!

Bus Schedule

PICK-UP	HWY 95 ROUTE	DROP-OFF
9:30AM	Greenhurst Bible Church	4:00PM
10:00AM	Nampa - Shell Station	3:30PM
10:20AM	Caldwell - Flying J, East Trucker Side	3:10PM
10:50AM	Fruitland - Chevron off Exit 3	2:40PM
11:30AM	Weiser - Sinclair	2:00PM
12:10PM	Cambridge - Library	1:20PM
12:40PM	Council - Cenex	12:50PM
1:20PM	New Meadows - City Park	12:10PM
2:00PM	Shiloh Bible Conference	11:30AM

**Bus transportation is available from the greater
Boise area for an additional \$20 each way.
(\$40 Round Trip)**

**Please arrive at the bus stop 10 minutes before
arrival/departure!**



Bus Schedule

PICK-UP	HWY 55 ROUTE	DROP-OFF
9:30AM	Greenhurst Bible Church	4:00PM
9:55AM	Ten Mile Christian Church - Franklin/Ten Mile	3:35PM
10:30AM	Ten Mile Community Church - Cloverdale/Columbia	3:00PM
11:00AM	Meridian Wal-Mart Super Store (Eagle & Fairview) Southwest Parking Lot	2:30PM
11:30AM	Eagle Home Depot - State Street	2:00PM
12:05PM	Horseshoe Bend - City Park	1:25PM
12:35PM	Banks	12:55PM
2:00PM	Shiloh Bible Conference	11:30AM

**Bus transportation is available from the greater
Boise area for an additional \$20 each way.
(\$40 Round Trip)**

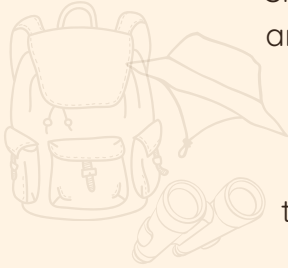
**Please arrive at the bus stop 10 minutes before
arrival/departure!**



June Adventure
22-26 Camp
Ages 7-9



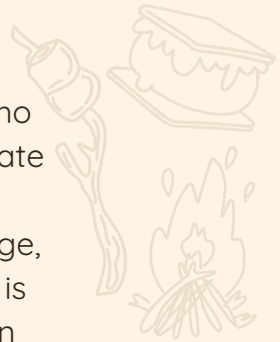
Shiloh's Adventure Camp is for campers who are 7 to 9 years old. Campers will participate in chapel and worship, indoor and outdoor activities, Bible adventure hour, ultimate challenge, and cabin competitions. Bus transportation is available from the greater Boise area for an additional \$20 each way.



June
15-19 Explorer
July Camp 1 & 2
20-24 Ages 10-12



Shiloh's Explorer Camps are for campers who are 10 to 12 years old. Campers will participate in chapel and worship, indoor and outdoor activities, Bible Challenges, ultimate challenge, and cabin competitions. Bus transportation is available from the greater Boise area for an additional \$20 each way.



July
6-10
Pathfinder
Camp
Ages 13-15



Shiloh's Pathfinder Camp is for campers who are 13 to 15 years old. Campers will participate in chapel and worship, indoor and outdoor activities, Bible Challenges, ultimate challenge, and cabin competitions. Bus transportation is available from the greater Boise area for an additional \$20 each way.



July
13-17
Trailblazer
Camp
Ages 16-18

Shiloh's Trailblazer Camp is for campers who are 16 to 18 years old. Campers will participate in chapel and worship, indoor and outdoor activities, Bible quizzing, ultimate challenge, and cabin competitions. Bus transportation is available from the greater Boise area for an additional \$20 each way.

Optional
Add-on Rafting Trip
for
\$70

YD Adventures will guide white-water rafting with our group down a portion of the Payette River while focusing on rafting skills and character-building activities. The rafting trip requires campers to complete YD's Participant Agreement and Health Release forms in order to attend. These will be provided online during registration.



What to Bring

Personal Articles:

The essentials include a Bible, pen, notebook, flashlight, and camera (cell phones are not permitted as cameras). Don't forget a water bottle, sleeping bag, pillow, bath towel, swim towel, soap, deodorant, toothbrush, hair care items, sunscreen, and mosquito repellent.

Clothes:

Modest swimming suit. (Bikinis and speedos are not allowed.) Casual clothes suitable for camp activities. Be prepared for warm & cool temps, sun and rain. Mornings and evenings can be cold at Shiloh. Closed toed shoes. Please bring sturdy tennis shoes for game time. Please note: all clothes and swimming attire must be modest by our judgment. If we deem something to be inappropriate for camp, you will be asked to change or wear additional clothing. All logos or phrases should be appropriate.

Medications:

All medications must be turned into the camp nurse upon arrival and must be in the original bottle with prescription label intact. The camp provides a nurse's station with normal over the counter medications.

Spending Money:

For camp t-shirts, hats, mugs, water bottles, cinch packs, canteen treats, etc. Spending money can be added at time of registration so that campers do not need to carry cash to camp. Cash brought to camp can be deposited at registration to be spent during the week. All unspent money will be returned to the camper at checkout.

What NOT to Bring

All ELECTRONIC DEVICES Include music players, movie players, cell phones (not allowed as alarm clocks or cameras), games, computers, internet devices, etc.

All fantasy games. All forms of matches/lighters.

All forms of weapons (including pocket knives).

All forms of tobacco and alcohol and all forms of illegal drugs.

Energy Drinks-defined by its high caffeine content and the inclusion of other stimulants.

Nuts: Due to the number of campers with nut allergies, we are a nut-free camp.

Any items or paraphernalia that promote sin.

Any items or paraphernalia that go against

Shiloh's Statement of Faith and the Word of God.

Leave-at-home items will be collected at registration for safekeeping and returned during checkout at the end of camp.

Camper Contact Info:

Send all camper mail to

P.O. Box 654,

Donnelly ID, 83615.

Mail will be distributed each day during Mail Call. During camp, a link will be provided to parents so they can send a fun message digitally.

The Camp office can be reached at **208.325.8239** (please only call campers in the event of an emergency).

Email: **Office@shilohbibleconf.org**

Website: shilohbibleconference.com

Additional Camps

2026 Winter/Spring/Fall

Snow Camp is for campers between the ages of 12 and 18. Campers will participate in chapel and worship, tubing, swimming, and snow games. Snow camp is a great opportunity to connect with friends from summer camp, make some new friends, and grow in your relationship with Jesus Christ.

One activity offered during snow camp is tubing at the Activity Barn. All participants must complete the Activity Barn waiver in order to participate at the tubing hill.

***Please note there is no bus transportation for this camp.**

January
16-19

Snow
Camp
Ages 12-18
\$80



June
9-12

Timothy
Camp
Ages 12-18
\$10

Summer
missionary
Training week
starts June 5th

The Timothy Camp is for campers who have qualified for the Timothy Discipleship program. Come ready to be challenged in your faith, serve with your peers and learn how to be a leader at the upcoming summer camps. Bus transportation is available from the greater Boise area for an additional \$20 each way



Women's Retreat

Seeks to bring women together, allowing them to connect in the great outdoors (and indoors) of Idaho and study the Word of God together.

Price includes food and lodging:

\$70 per person. \$35 if not staying for overnight

March
13-15

Womens
retreat
\$70



May
15-17

Mens Retreat

\$70 Ages 16 and Up



Mens Retreat

Designed to draw men together in the rugged beauty of Idaho for fellowship rooted in the Word. Our aim is to strengthen men through intentional discipleship, calling them to grow as faithful followers of Christ in every sphere of life. Price includes food and lodging: \$70 per person. \$35 if not staying for overnight.

FAMILY CAMP

Housing: Bring your own RV, or tent or reserve a cabin. Housing preferences will be granted in order of registration.

Price includes food and lodging:

Age 5 and up: \$70

Age 4 and under: Free

Max Cost for Immediate Family:
\$210

September
4-7

Family
Camp
\$70
(Max \$210 per
family)



October Timothy
4-5 Kick-off
Ages 11-18
FREE!



One of Shiloh's main goals is discipleship. One way we do this is through discipling and training our youth to serve Christ, both at camp and in their communities. The Timothy Program is a year round discipleship program for youth who will be between 12 and 18 by Summer 2027.

If you're interested in getting to know your Timothy Advisor, your Timothy group, and to learn more about this program then this camp for you!

Our Timothy Kick-off is an intense, Christ centered, and fun filled one night sleepover at Shiloh Bible Camp. This camp is free for campers interested in joining the Timothy program.

***Please note there is no bus transportation for this camp.**

This weekend camp is for campers 16 and up. If you're looking to deepen your faith in Jesus Christ, learn more from God's Word, fellowship with and serve alongside other believers, then this camp is for you!

The cost for this camp is \$75.

***Please note there is no bus transportation for this camp.**

November Discipleship
7-9 Camp
Ages 16+
\$75



Volunteers Needed

Opportunities: Shiloh seeks to make camp as affordable as possible. Therefore, all our camps are staffed by full-time and summer missionaries, Timothy's, seasonal and weekly volunteers.

Positions Needed for Each Camp

- CDL Bus Drivers
- Cabin Leaders
- Worship Leaders
- Kitchen Staff
- Facilities Volunteers
- Nurses
- Speakers
- Special Skill Class Leaders



If you are interested in serving at Shiloh for one or all of our camps, please contact the office at 208-325-8239 or

Office@shilohbibleconf.org

or Scan the QR Code Below:





Shiloh Bible Summer Camps

Do you want to earn extra cash towards the Shiloh camp store? If so, complete this card for bonus bucks to be spent at the camp store. You can earn Shiloh bucks through church or youth group attendance, Bible memorization, or by bringing new friends to Shiloh Bible Camp.

Church or youth group participation:

	Week 1	Week 2	Week 3	Week 4	Week 5
July					
August					
September					
October					
November					
December					
January					
February					
March					
April					
May					
June					

Must be initialed by parent, guardian, pastor or Sunday school teacher.

Each church visit earns you one Shiloh Buck.



As an added bonus, points earned on this card will be given to your camp team upon arrival at camp.

Invite a new friend to Shiloh Bible Camp. **Friend Names:** 1. _____

If this is their first time attending, you and your friend will earn 20 Shiloh Bucks to be spent in the Camp Store 2. _____

3. _____ 4. _____ 5. _____ 6. _____

Bible Memorization (to be recited to your cabin leader on the first day of camp).
Each quoted verse earns you one Shiloh buck.

Romans 5:8		Philippians 4:7		Psalms 1:6		Acts 5:29		Matthew 4:19
Isaiah 26:4		Philippians 4:8		Psalms 46:10		Acts 16:31		Matthew 5:16
Ephesians 2:8		Colossians 3:2		Psalms 107:1		Romans 3:23		Matthew 22:37
Ephesians 2:9		Colossians 3:16		Psalms 118:24		Romans 10:13		Matthew 22:38
Ephesians 2:10		Colossians 3:20		Psalms 119:9		Romans 12:1		Matthew 22:39
Ephesians 6:1		1 Thessalonians 5:17		Psalms 119:105		Romans 12:2		Matthew 28:6
Ephesians 6:2		2 Timothy 1:7		Psalms 136:1		James 1:17		Matthew 28:19
Ephesians 6:3		1 Corinthians 10:13		Psalms 139:14		James 4:7		Matthew 28:20
Ephesians 6:10		1 Corinthians 10:31		Psalms 150:6		1 Peter 5:8		Luke 6:31
Ephesians 6:11		Galatians 5:22		Proverbs 3:5		1 John 1:9		John 3:16
Philippians 4:4		Galatians 5:23		Proverbs 3:6		1 John 3:23		John 14:6
Philippians 4:5		Genesis 1:1		Proverbs 13:20		1 John 4:4		Joshua 1:9
Philippians 4:6		Deuteronomy 6:25		Proverbs 4:23		1 John 4:19		1 John 3:18

Turn this card in upon arrival to the registration desk.

Please note: Camp store prices vary by item and camp bucks are not equivalent to one cash dollar.

Shiloh Bible Conference

P.O. Box 654

Donnelly ID, 83615

Non Profit Org. US

Postage

PAID

Permit No. 120

Donnelly, ID 83615

Greetings From

SHILOH

Bible Camp